

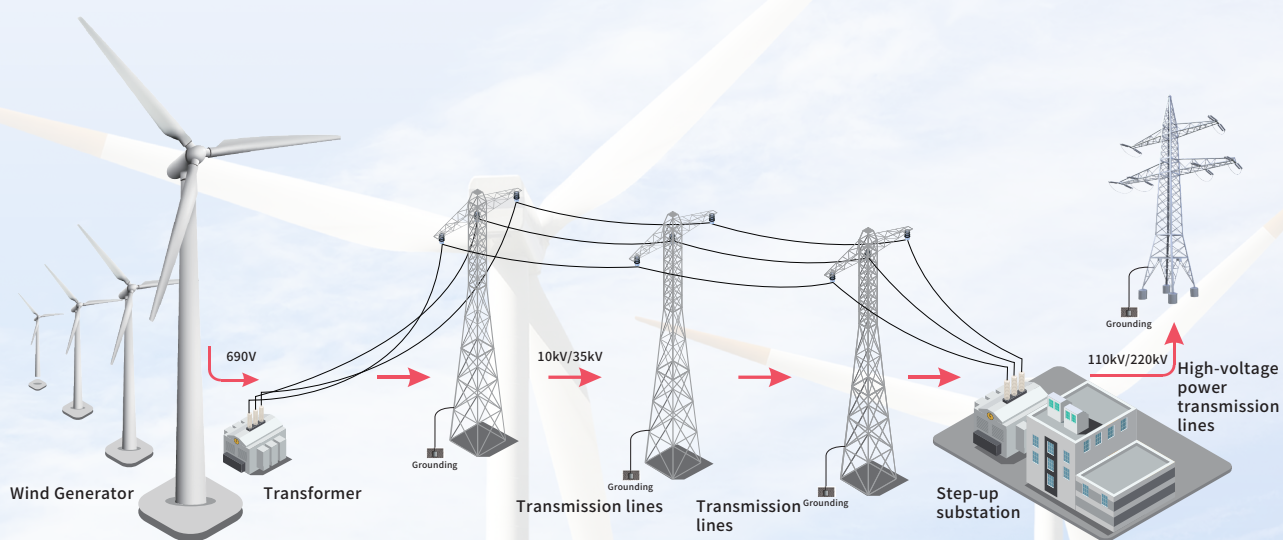
# Wind Energy Operation and Maintenance Solutions

Just as the solar photovoltaic energy has seen sustained growth, wind power has also experienced significant expansion. By the end of 2022, the new installed capacity reached 78GW, representing 22% of the total. This upward trajectory is projected to persist at an accelerated pace. To meet the demands of this thriving market, UNI-T provides a comprehensive suite of tools tailored for the renewable energy sector. These tools guarantee expedited, secure, and effective solar system installation and maintenance processes.





# Wind Energy Operation and Maintenance Solutions



Multimeter & Clamp Meters			Temperature	Hand-held Acoustic imager	Battery Tester	Environmental Testers			
UT18B MAX	UT18D	UT219PV	UTi740H	UT568B	UT3550	UT312A	UT372D	UT362H	UT325F
Digital Multimeter	Voltage and Continuity Tester	Professional AC/DC Clamp Meter-SOLAR	Thermal Imager	Hand-held Acoustic imager	Battery tester	Vibration Tester	2 in 1 Tachometer	Hot Wire Anemometer	4-Channel Thermometer

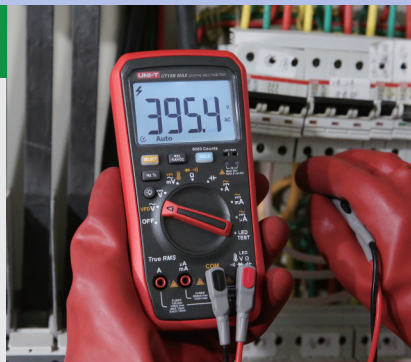
Electrical Installation Testers									
UT253A	UT255B	UT262E	UT278C	UT279	UT505B	UT513C	UT515B	UT575B	UT620C+
Large Jaw Leakage Current Clamp Meter	High Voltage Clamp Leaker	None-contact Phase Detector	Earth Clamp Meter	Transformer Grounding Current Tester	Handheld Insulation Resistance Tester	Insulation Resistance Tester	10KV Insulation Resistance Tester	Double clamp Multifunctional Earth Tester	Micro Ohm Meter



## UT18B MAX Digital Multimeter

### Scenarios and Features:

1. Suited for wind energy system and electrical maintenance
2. True RMS measurement
3. Strong anti-interference
4. Input protection & Mis-plug alarm



## UT18D Voltage and Continuity Tester

### Scenarios and Features:

1. Suited for wind energy system and electrical maintenance
2. Up to 690V AC/DC voltage measurement
3. RCD test & phase rotation test
4. Large LCD for each voltage level



## UT219PV Professional AC/DC Clamp Meter-SOLAR

### Scenarios and Features:

1. Suited for wind energy system and solar system
2. True RMS measurement
3. High-voltage test (up to DC 2500V & AC 1500V)
4. IP65 protection and CAT III 1500V



## UT253A Large Jaw Leakage Current Clamp Meter

### Scenarios and Features:

1. Suited for wind energy system and electrical maintenance
2. Wide current range (0mA to 1200A)
3. Measurable dia.: 80 x 80mm
4. Strong an-ti interference (RS-232)
5. Leakage current measurement

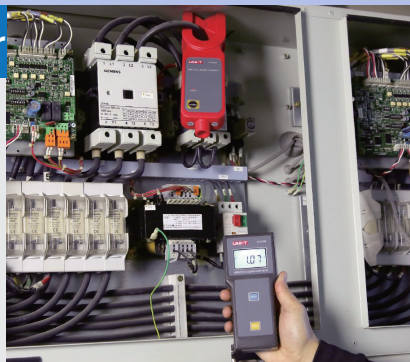




## UT255B High Voltage Clamp Ammeter

### Scenarios and Features:

1. Suited for wind energy system and electrical maintenance
2. Suited for high voltage power system (up to 69KV)
3. Wireless transmission (up to 30m)
4. Strong anti-interference (RS-232)



## UT262E None-contact Phase Detector

### Scenarios and Features:

1. Suited for wind energy system and electrical maintenance
2. None-contact detection
3. Phase sequence judgement
4. Audible & Visible indication



## UT278C Ground Pile Earth Resistance Tester

### Scenarios and Features:

1. Suited for wind energy system and electrical maintenance
2. 3/4-wires measurement
3. Earth resistance measurement (1800Ω)
4. Leakage current measurement
5. PC software analysis



## UT279 Transformer Grounding Current Tester

### Scenarios and Features:

1. Suited for wind energy system and electrical maintenance
2. Leakage current measurement
3. Large Jaw size
4. None-contact measurement
5. Strong anti-interference





## UT505B Hand-held Insulation Resistance Tester

### Scenarios and Features:

1. Suited for wind energy system and electrical maintenance
2. True RMS insulation resistance measurement
3. Portable and compact design
4. High output voltage alarm (voltage: up to 1000V)



## UT513C Insulation Resistance Tester

### Scenarios and Features:

1. Suited for wind energy system and electrical maintenance
2. High output voltage (up to 5KV)
3. PI & DAR measurement
4. Stepping output voltage (10% of the range)
5. Auto discharge & comparison test

## UT515B 10KV Insulation Resistance Tester

### Scenarios and Features:

1. Suited for wind energy system and electrical maintenance
2. High output voltage (up to 10KV)
3. PI & DAR measurement
4. Stepping output voltage (10% of the range)
5. Auto discharge & comparison test







## UT575B Double-Clamp Multifunctional Earth Tester

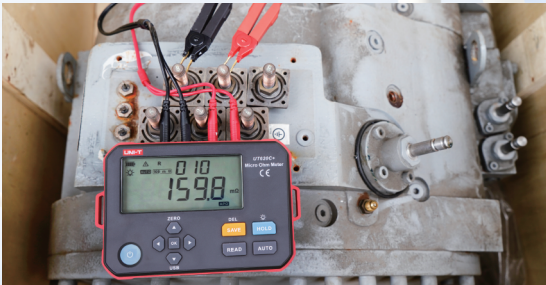
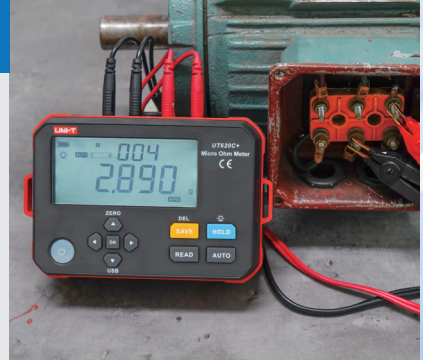
### Scenarios and Features:

1. Suited for wind energy system and electrical maintenance
2. 3/4-wires measurement for grounding system
3. Double-clamp method for grounding system
4. Grounding voltage and current measurement
5. Strong anti interference

## UT620C+ Micro Ohm Meter

### Scenarios and Features:

1. Suited for wind energy system and electrical power system
2. Micro ohm measurement
3. Potable and compact design
4. PC software analysis



## UTi740H Thermal Imager

### Scenarios and Features:

1. Suited for wind energy system & solar system
2. Wider temp. measurement:  $-30^{\circ}\text{C} \sim 650^{\circ}\text{C}$
3. High-performance detector with 640 x 480 resolution
3. High-quality infrared images: 4.3" IPS LCD & 384 x 288 pixels detector
4. Connect the "Thermal Link" app via the Wi-Fi connection





## UT568B Hand-held Acoustic Imager

### Scenarios and Features:

1. Suited for wind energy system and electrical power system
2. 138 Helically arranged high-sensitivity digital MEMS microphones
2. Using scenarios: Partial discharge detection, leakage detection
3. Long working distance: 0.3m~150m



## UT3550 Battery Tester

### Scenarios and Features:

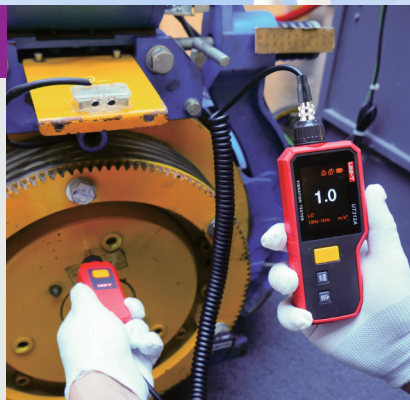
1. Suited for wind energy system and electric vehicle system
2. Live test for the resistance and voltage measurement
3. High precision: 0.001mΩ and 0.1mV
4. Support SCPI protocol (for remote control)



## UT312A Vibration Tester

### Scenarios and Features:

1. Suited for machine maintenance and power industry
2. Acceleration/velocity/displacement measurement
3. Multiple probes
4. LCD TFT and automatically rotatable screen
5. Rechargeable lithium battery



## UT372D 2 in 1 Tachometer

### Scenarios and Features:

1. Suited for vehicle maintenance and motor repair
2. Contact and non-contact measurements
3. Multi-measurement modes: RPM, frequency, count, surface velocity, length
4. Bluetooth APP





## UT362H Hot Wire Anemometer

### Scenarios and Features:

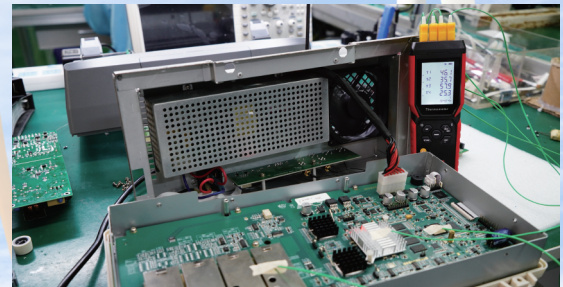
1. Suited for HVAC and automobile conditioning system
2. Platinum resistance wind velocity sensor
3. Measurement range: 0~30.0m/s
4. Wind velocity/volume/temperature measurement
5. 99 sets of data storage



## UT325F 4-Channel Thermometer

### Scenarios and Features:

1. Suited for laboratory and electronic engineering
2. 4-channel temperature measurement supported
3. Compatible with 7 types of thermocouples (J, K, T, E, R, S, N)
4. Temperature difference of each channel displayed
5. PC software and phone APP connection
6. 72000 groups of data storage



**Facebook**

<https://www.facebook.com/unitrend88/>



**YouTube**

<https://www.youtube.com/UniTrendTechnology>



**LinkedIn**

<https://www.linkedin.com/company/uni-trend-technology-china-limited>

\*UNIT retains the authority to provide the final interpretation of any information, services, or terms pertaining to these products.

**UNI-TREND TECHNOLOGY**

[www.uni-trend.com](http://www.uni-trend.com)

