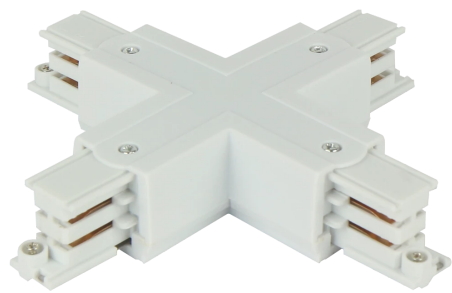


code: 210684 EAN: 5905378210684

Connector X for 3 phase trak LUMICANTO white with feeding PRIME

The X connector is used to connect for sections of track rail at right angle. Power supply connection possible.



Ambient temperature suitable for operation

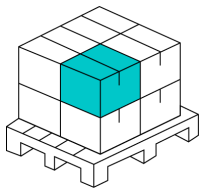
Parameter	Value
Warranty (years)	5
Rated power	220-240V AC
Rated current	16A
Housing material	Plastic
Mounting type	3 phase rail
Frequency of the supply voltage	50/60Hz
Colour	White
Ambient temperature suitable for operation	5÷40 °C

Parameter	Value
IEC protection class	I
Full box quantity	50 pc
Length	162 mm
Width	162 mm
Height	31 mm
Product weight with packaging	181 g
Power supply connection	yes
Equivalent	XTS 38

Single packaging



Bulk packaging



Outer box quantity

50 pcs.

Europallet

