

圖號. DRAWING. NO : FP3F-VF-6

品名 NAME : FULLY INSULATED PVC FEMALE DISCONNECTS

校訂版次 REVISIONS

版次	記述 DESCRIPTION	DATE	核可
4	更改產品尺寸	2019. 08. 23	KEN
5	修改尺寸	2021. 06. 21	KEN
6	F值公差修改	2023. 02. 15	KEN

NOTE:

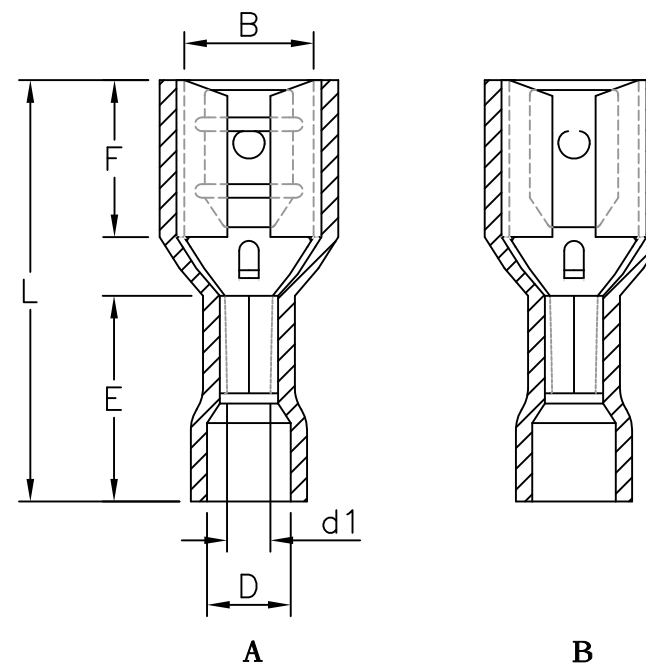
1. MAXIMUM ELECTRICAL RATING: 105°C 300 VOLTS
2. WIRE RANGE: 22-16 AWG / 0.5-1.5 mm²
INSULATED COLOR: RED
3. WIRE RANGE: 16-14 AWG / 1.5-2.5 mm²
INSULATED COLOR: BLUE
4. WIRE RANGE: 12-10 AWG / 4-6 mm²
INSULATED COLOR: YELLOW
5. MATERIAL THICKNESS: t
TOLERANCE: ±0.05



MAXIMUM ELECTRIC CURRENT

A. W. G	22	20	18	16	14	12	10
MAX AMP	3	4	7	10	15	20	24

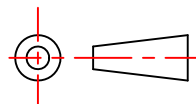
WIRE RANGE AWG/mm ²	產品編號 ITEM NO.	NEMA TAB	B	F REF.	L ±1.00	E ±0.60	D ±0.30	d1 ±0.20	t
22-16 AWG 0.5-1.5 mm ²	B F1-2.8VF/5	0.5x2.8	3.2 ±0.30	6.4	19.0	10.0	4.0	1.7	0.30
	B F1-2.8VF/8	0.8x2.8	3.2 ±0.30	6.4	19.0				0.30
	A F1-4.8VF/5	0.5x4.8	5.0 ±0.20	6.5	20.0				0.35
	A F1-4.8VF/8	0.8x4.8	5.0 ±0.20	6.5	20.0				0.35
	A F1-6.4VF	0.8x6.4	6.6 ±0.20	7.9	22.0				0.40
16-14 AWG 1.5-2.5 mm ²	B F2-2.8VF/5	0.5x2.8	3.2 ±0.30	6.4	19.0	10.0	4.5	2.3	0.30
	B F2-2.8VF/8	0.8x2.8	3.2 ±0.30	6.4	19.0				0.30
	A F2-4.8VF/5	0.5x4.8	5.0 ±0.20	6.5	20.0				0.35
	A F2-4.8VF/8	0.8x4.8	5.0 ±0.20	6.5	20.0				0.35
	A F2-6.4VF	0.8x6.4	6.6 ±0.20	7.9	22.0				0.40
12-10 AWG 4-6 mm ²	A F5-6.4VF	0.8x6.4	6.6 ±0.20	7.9	25.0	13.0	5.5	3.4	0.40
	A F5-9.5VF	1.2x9.5	9.9 ±0.20	12.5	30.0				0.50



認可 APPROVALS

製圖 DRAFT:	TINA
設計 DESIGN:	KEN
核可 CHECKED:	KEN

第三視角
THIRD VIEW



MATERIAL

INSULATION : VINYL
MATERIAL : BRASS
TIN PLATING

單位 UNIT

m/m
比例 SCALE



集勝端子股份有限公司
JEESON TERMINALS Co., LTD

日期 DATE: 2015. 01. 05